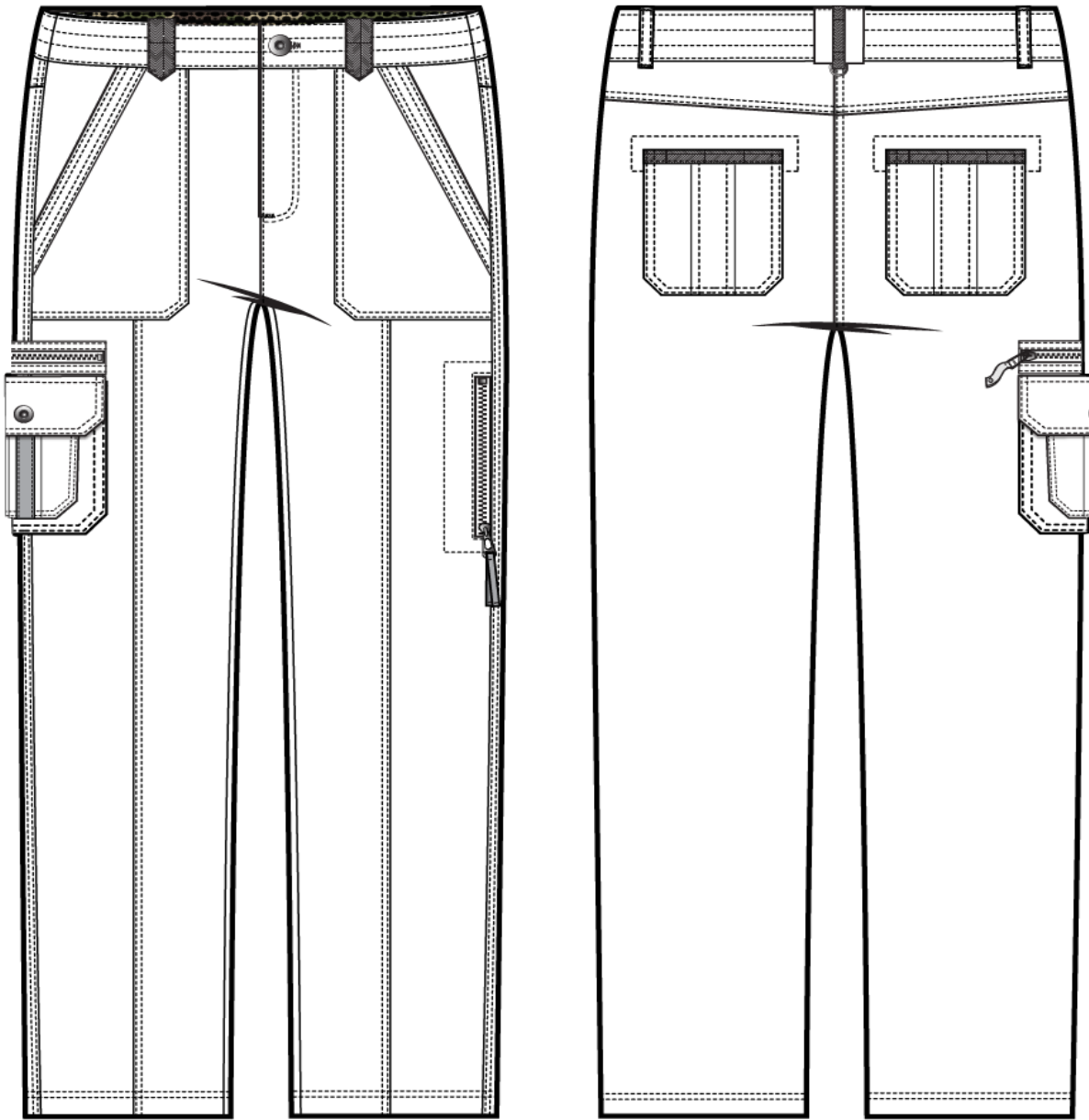


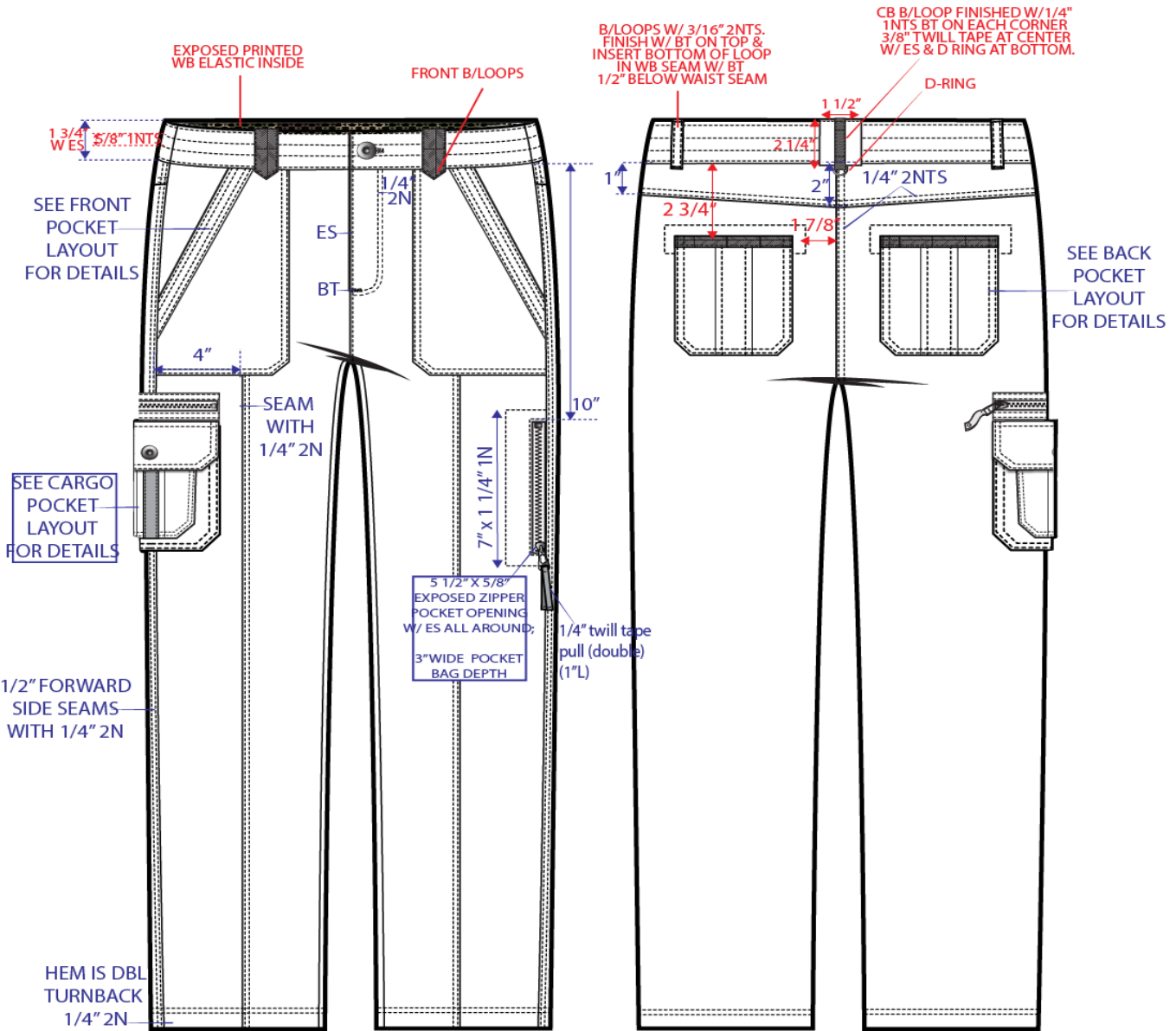


# 74426R12

31" INSEAM / 16 1/2" LO

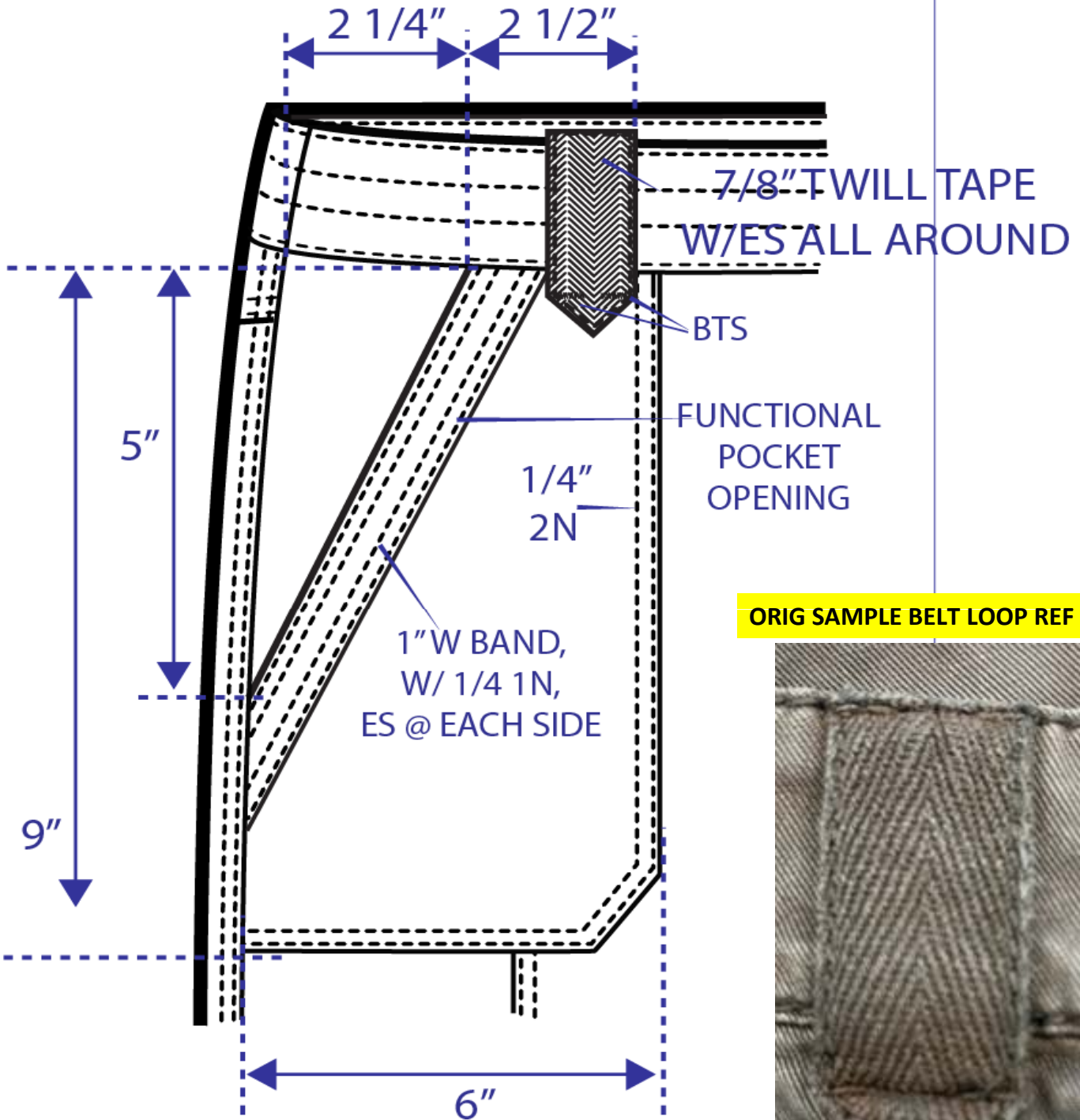


This design is intended only for the use of the individual or entity to which it is addressed and is the intellectual property of IDG, Inc. It is confidential in nature and is protected by applicable privileges and constitutes non-public information. It is intended to be conveyed only to the designated recipients. Use, dissemination or reproduction of this design by unintended recipients is not authorized and may be unlawful.



T534 RIVET

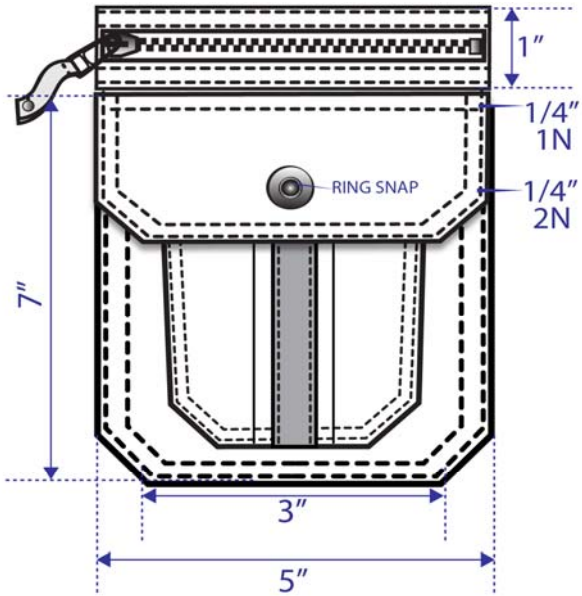
# FRONT POCKET LAYOUT



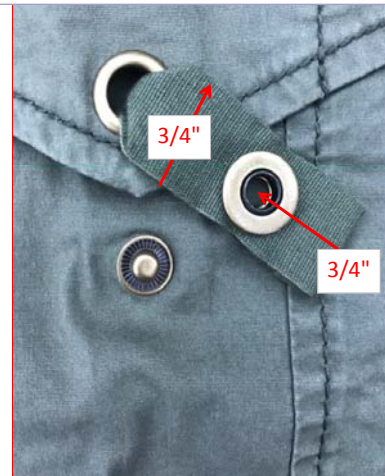
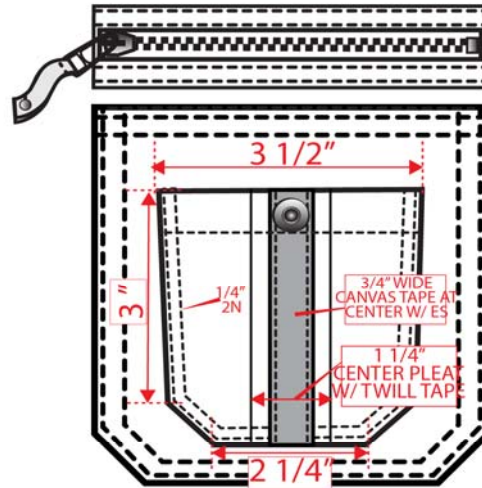
ORIG SAMPLE BELT LOOP REF



## SIDE CARGO POCKET DETAILS

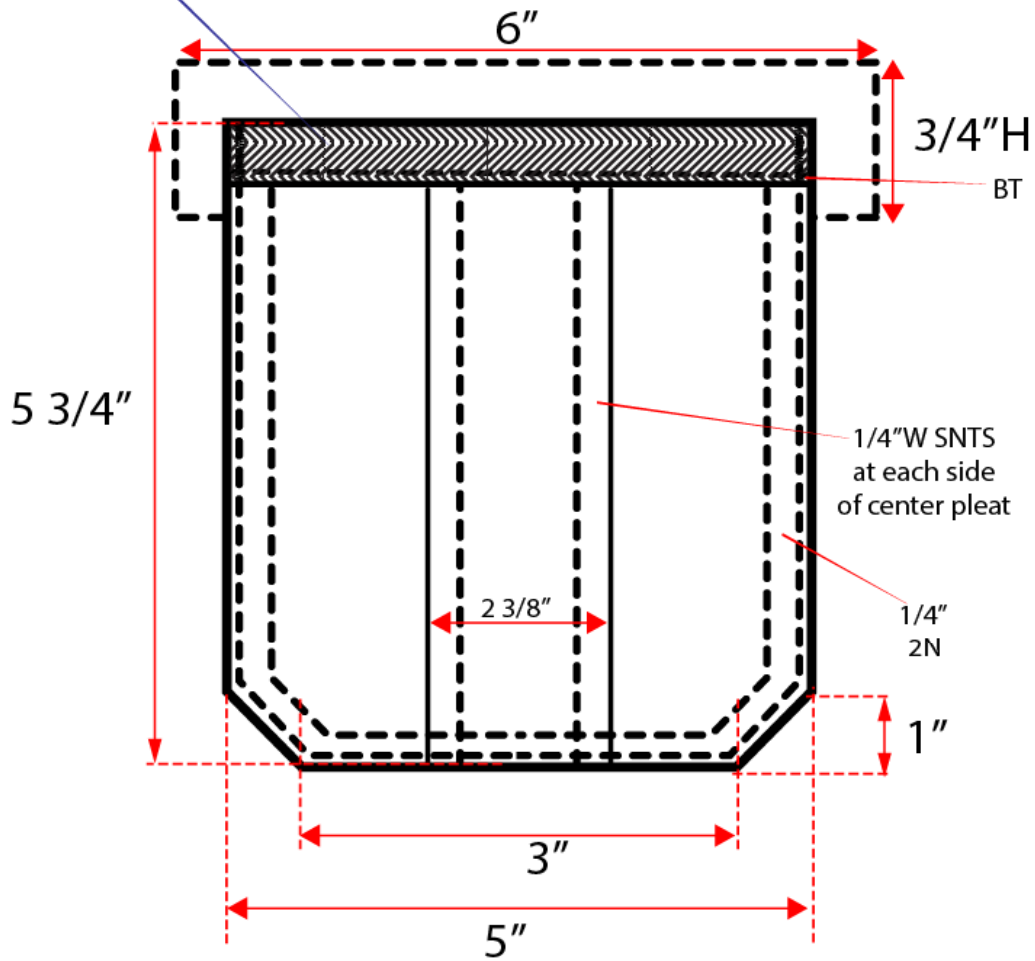


## SIDE CARGO POCKET DETAILS UNDER FLAP



# BACK POCKET DETAILS

Twill Tape, 2ply Finishes  
Pocket Opening, 3/4" W  
finished, SNES at bottom  
edge, BT at each side



**BACK BELT LOOP REF**





Brand:		BASS PRO SHOPS				Due in NY: 8.28.25		Date: 8.14.2025			
Style Number	Style Description	Fabric Ref #	Fabric Description	Fabric Color	Garment Wash & Pressing	Thread Color	Trim	Inside Waist	Label	Notes	Sample Size
74426R12	31" INSEAM CONVERTIBLE CARGO CAPRI	2552	2552 FREEDOM DENIM, STR DENIM - 59% ctn, 33% Rayon, 6% Poly, 2% Sp 12S+12SB*21S+50D+40D/92*58	MEDIUM WASH - WITH SAND BLAST SEE BELOW PICTURES SAMPLE FOR SAND BLAST EFFECT	GW SILICONE SOFTENER - SEE FABRIC COLOR FOR INDIGO WASH REF	20'S/3  7 SPI  INK	<p><b>ALL METAL FINISH : ST08 Antique Nickel</b></p> <p><b>CF BUTTON:</b> (1 PC) "Natural Reflections" LOGO TACK BUTTONS T527 30L</p> <p><b>METAL ZIPPER:</b> (1 PC) 4.5G ZIPPER AT CF (1 PC) 3G ZIPPER AT SIDE ZIP PKT W/ T455 METAL PULLER (1 PC) 3G ZIPPER AT SIDE ZIP ABOVE CARGO PKT W/ T455 METAL PULLER</p> <p><b>HERRINGBONE TWILL TAPE -DTM</b> FINISHED WIDTH 3/4" - @ SIDE CARGO POCKET CENTER PLEAT. AND @ BACK PACKET OPENING EDGE</p> <p><b>SNAPS: T607 RING SNAP</b> (1 PC @ SIDE CARGO POCKET FLAP) (2 PCS @ BACK POCKETS) 23L</p> <p><b>HERRINGBONE TWILL DTM TAPE:</b> 3/8" FOR BACK BELT LOOP, 7/8" FOR FRONT BELT LOOP 3/4" FOR BACK POKETS, 1/4" AT ZIPPER PULL AT SIDE ZIPPER POCKET &amp; 1/4" AT ZIPPER PULL AT ABOVE CARGO POCKET</p> <p><b>INNER PRINTED ELASTIC:</b> SIZE: 1 3/4" W COLOR: P5883A</p>	INNER WB : inner printed elastic see art below for ref only, pls follow art sent to you for color/scale			8

**P5883A PRINTED WB FOR REF ONLY**



**OPHOTO FOR SUBTLE SAND BLAST EFFECT AT FRONT AND BACK - FOLLOW FOR REF ONLY IN LOOK AND PLACEMENT**





CF BUTTON



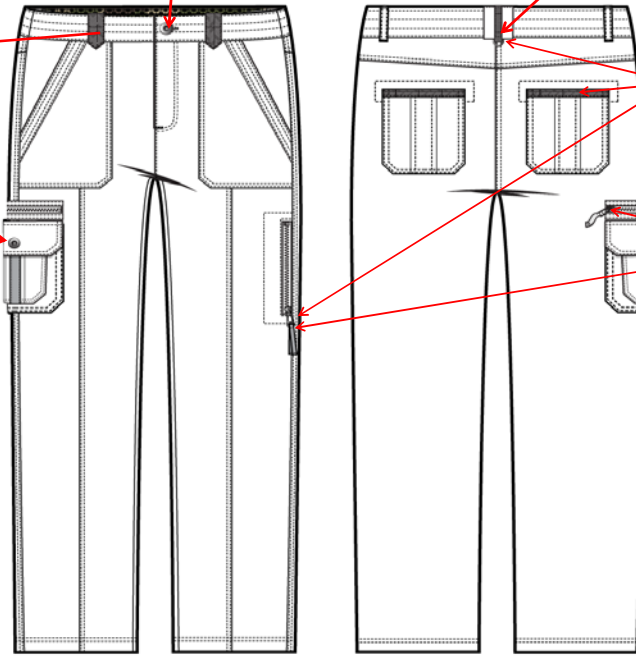
3/8" L X 1/2" W DRING



HERRINGBONE TWILL TAPE



T-455 ZIPPER PULL



Brand:		BASS PRO SHOPS			Due in NY: COSTING		Date: 8.14.2025				
Style Number	Style Description	Fabric Ref #	Fabric Description	Fabric Color	Garment Wash & Pressing	Thread Color	Trim	Inside Waist	Label	Notes	Sample Size
74426R12	31" INSEAM CONVERTIBLE CARGO CAPRI	2302	2302 - 5.9oz Stretch Twill  98% Cotton, 2% Spx  32X32+40D / 162X66 WIDTH: 57/58" 200gm AW	GRANITE GREY - PGD	HEAVY ENZYME WASH WITH SILICONE AND SOFTENERS  HI/LOW SEAM PUKCER Light Steam RUMPLED LOOK	20'S/3  7 SPI  20% DARKER THAN GROUND	<p><b>ALL METAL FINISH - ST08 Antique Nickel</b></p> <p><b>CF BUTTON:</b> (1 PC) "Natural Reflections" LOGO TACK BUTTONS T527 30L</p> <p><b>METAL ZIPPER:</b> (1 PC) 4.5G ZIPPER AT CF (1 PC) 3G ZIPPER AT SIDE ZIP PKT W/ T455 METAL PULLER (1 PC) 3G ZIPPER AT SIDE ZIP ABOVE CARGO PKT W/ T455 METAL PULLER</p> <p><b>HERRINGBONE TWILL TAPE: -DTM</b> FINISHED WIDTH 3/4" - @ SIDE CARGO POCKET CENTER PLEAT, AND @ BACK PACKET OPENING EDGE</p> <p><b>SNAPS: T607</b> RING SNAP (1 PC @ SIDE CARGO POCKET FLAP) (2 PCS @ BACK POCKETS) 23L</p> <p><b>HERRINGBONE TWILL DTM TAPE:</b> 3/8" FOR BACK BELT LOOP, 7/8" FOR FRONT BELT LOOP 3/4" FOR BACK POKETS, 1/4" AT ZIPPER PULL AT SIDE ZIPPER POCKET &amp; 1/4" AT ZIPPER PULL AT ABOVE CARGO POCKET</p> <p><b>INNER PRINTED ELASTIC:</b> SIZE: 1 3/4" W COLOR: P5883A</p>	INNER WB : inner printed elastic see art below for ref only, pls follow art sent to you for color/scale			8

**P5883A PRINTED WB FOR REF ONLY**





CF BUTTON



3/8" L X 1/2" W DRING

HERRINGBONE TWILL TAPE



T607

T-455 ZIPPER PULL

