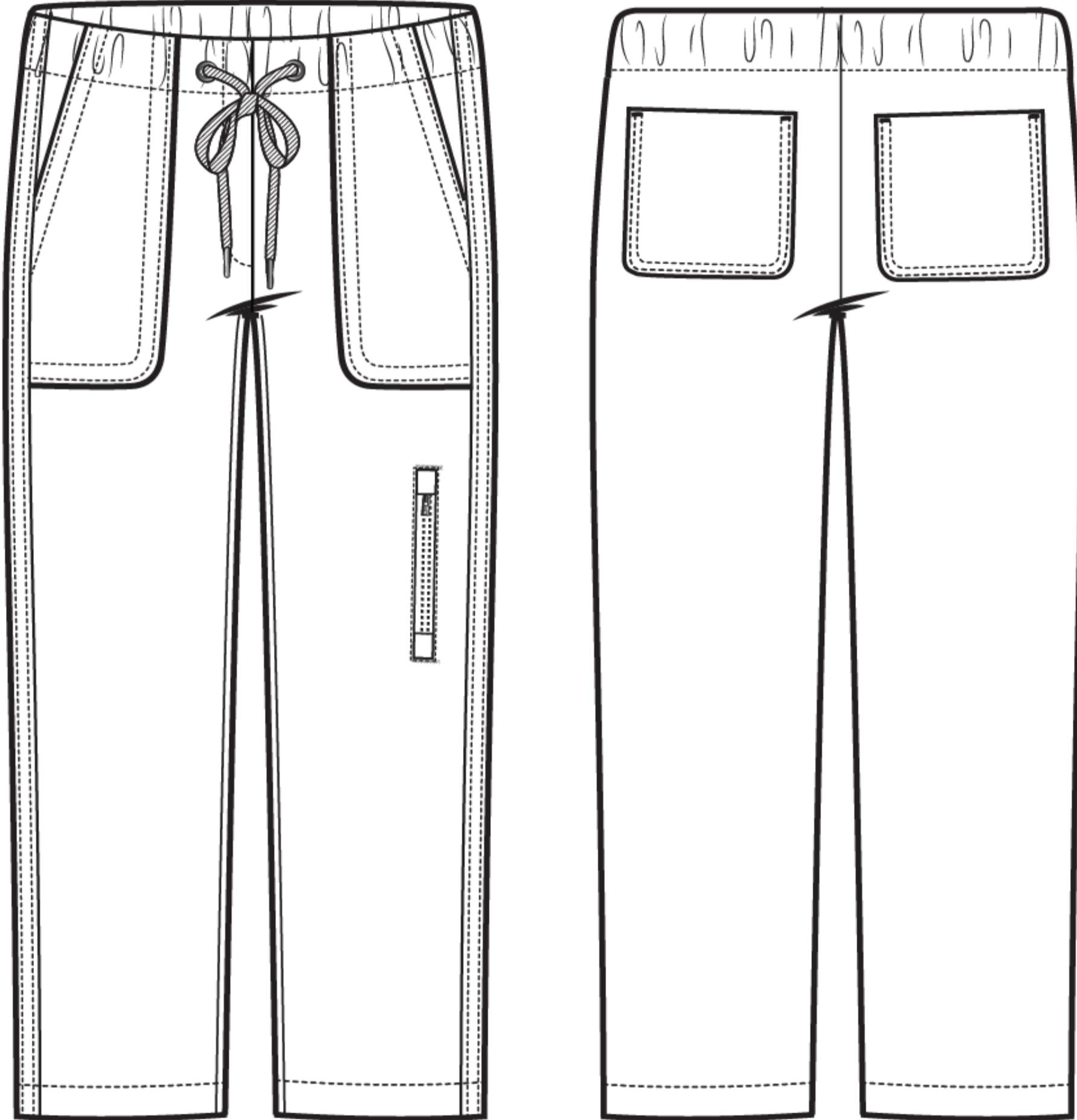




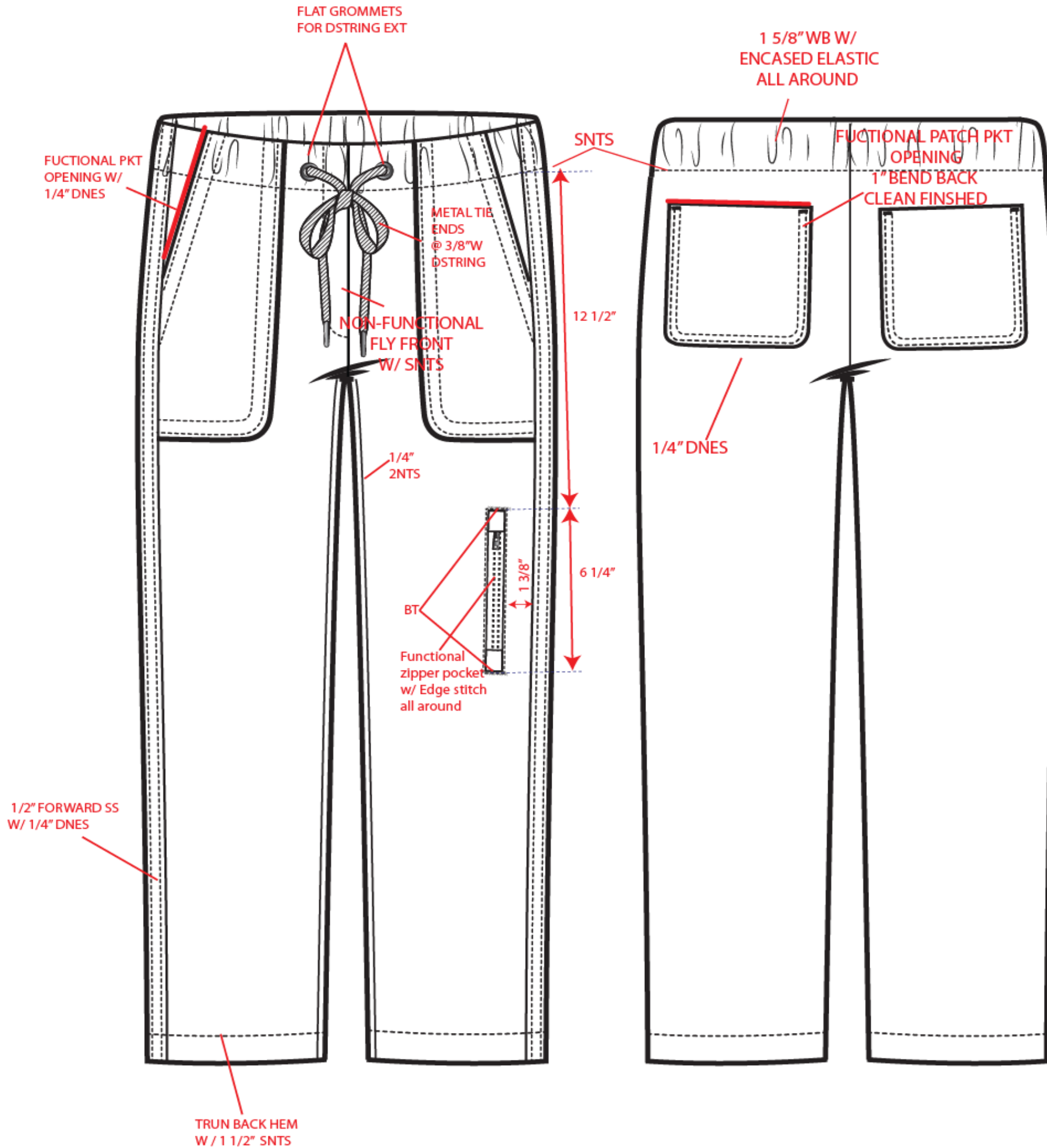
INTERNATIONAL DIRECT GROUP INC.

(75361R5)
28" INSEAM



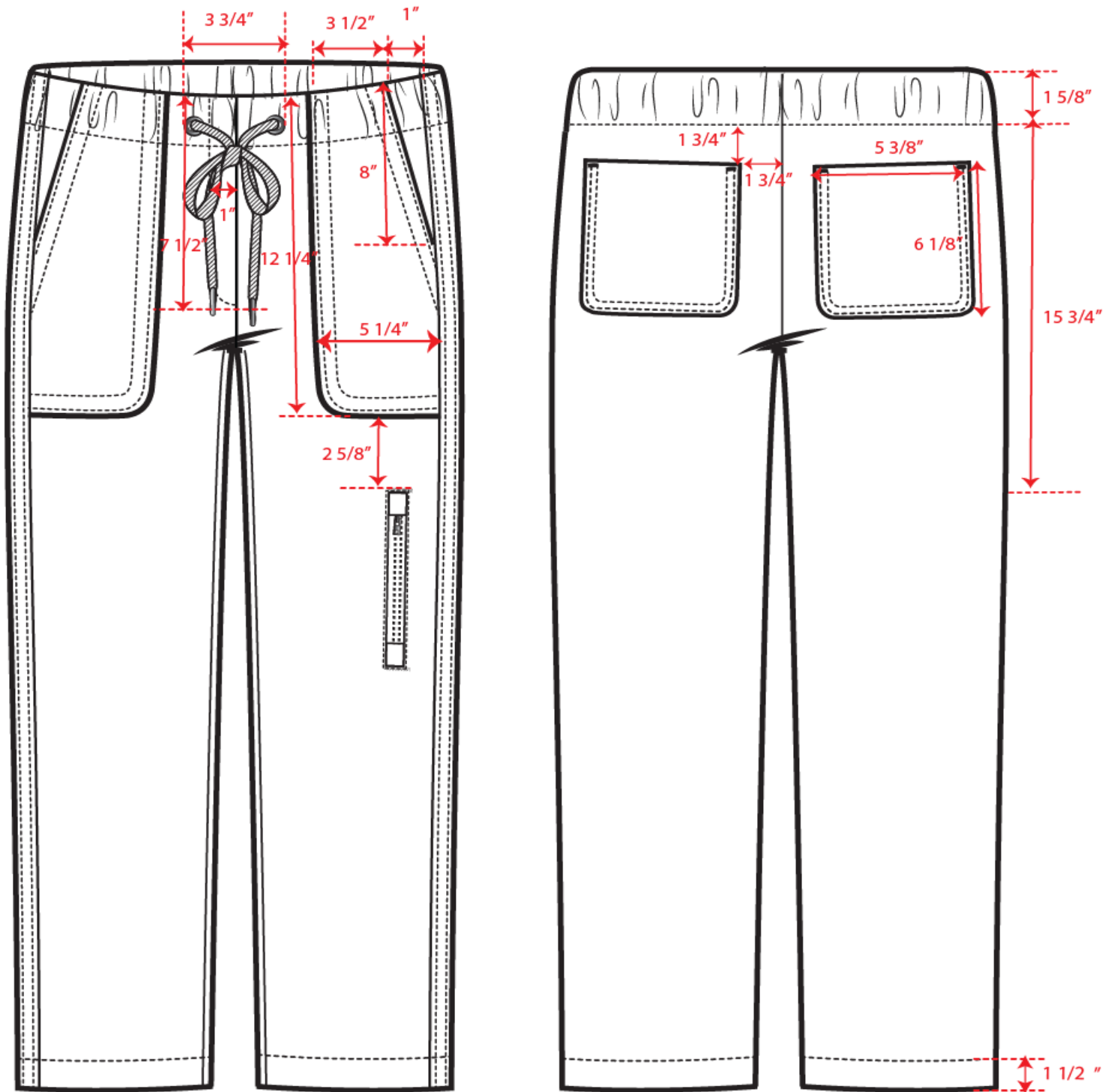
This design is intended only for the use of the individual or entity to which it is addressed and is the intellectual property of IDG, Inc. It is confidential in nature and is protected by applicable privileges and constitutes non-public information. It is intended to be conveyed only to the designated recipients. Use, dissemination or reproduction of this design by unintended recipients is not authorized and may be unlawful.

(75361R5)
28" INSEAM



This design is intended only for the use of the individual or entity to which it is addressed and is the intellectual property of IDG, Inc. It is confidential in nature and is protected by applicable privileges and constitutes non-public information. It is intended to be conveyed only to the designated recipients. Use, dissemination or reproduction of this design by unintended recipients is not authorized and may be unlawful.

(75361R5)
28" INSEAM



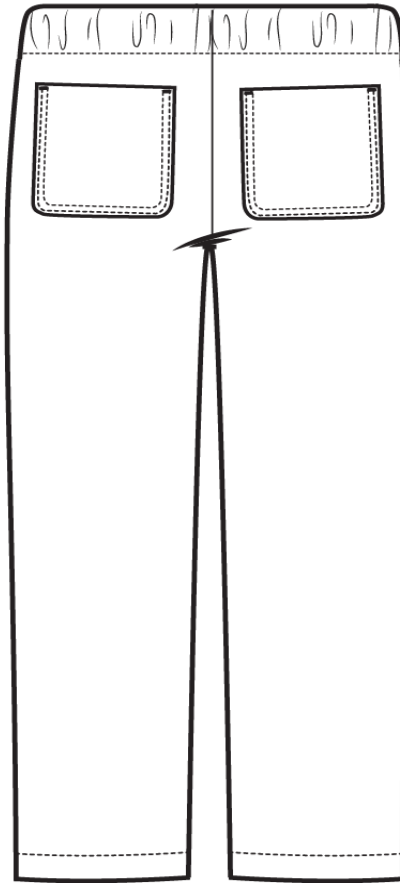
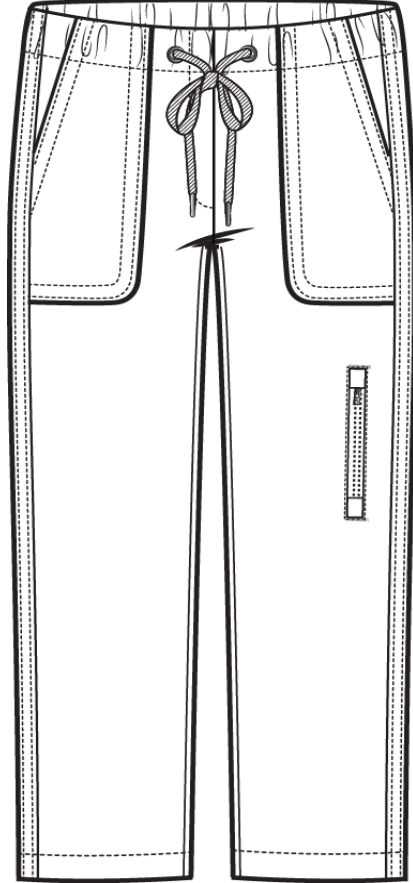


1/2" w self 2ply
set in at each
zip end

IDG

STYLE 款号: **75361R5**

DATE: 9/28/2022
UNIT: INCH



POM	DESCRIPTION		SIZE8
1	WAIST @ TOP EDGE (along edge, RELAXED)	腰围上口 (直量)	30 1/2
2	WAIST @ TOP EDGE (RELAX)	腰围上口 (松量)	
3	WAIST @ TOP EDGE (EXTENDED)		38
4	WAIST @ SEAM	腰围 (缝处量)	31 1/2
5	WAISTBAND WIDTH	腰头宽	1 5/8
6		后育克高度 (含腰)	
7	HIGH HIP (3 1/2" BELOW WB TOP EDGE)	高臀围 (含腰下3 1/2")	35
8	LOW HIP (7 1/2" BELOW WB TOP EDGE)	低臀围 (含腰下7 1/2")	39
9	THIGH (1" BELOW CROTCH)	腿围 (裆下1")	24
10	KNEE (13 1/2" BELOW CROTCH)	膝围 (裆 13 1/2")	GA
11	FRT RISE (TO TOP OF W.B.)	前浪 (含腰)	11
12	BK RISE (TO TOP OF W.B.)	后浪 (含腰)	16 1/2
13	INSEAM	内长	28
14	OUTSEAM (INCLUDING W.B.)	外长 (含腰)	
15	LEG OPENING	脚口	14
16	BACK POCKET LENGTH	后袋长	SEE DETAILS
17	BACK POCKET WIDTH	后袋宽	SEE DETAILS
18	SIDE POCKET PLACEMENT FROM TOP OF W.B.	侧袋位置 (含腰)	SEE DETAILS
19	SIDE POCKET W X H	腿袋长	SEE DETAILS
20	D-STRING LENGTH EACH END		11
21			
22			
23	FLY LENGTH from top of W.B.	门襟长	SEE DETAILS
24	FLY WIDTH	门襟宽	SEE DETAILS
25	FRONT POCKET LENGTH	前袋长	SEE DETAILS
26	FRONT POCKET WIDTH	前袋宽	SEE DETAILS
27	HEM WIDTH	脚压线宽	1 1/2
28	SIDE SEAM FORWARDING @ WB SEAM	侧缝走前 (于腰缝处)	1/2
29	SIDE SEAM FORWARDING @ HIP	侧缝走前 (于臀围处)	1/2
30			
31			
32			
33			
34			
35			
36			



International Direct Group 525 7th Ave. 2ND FL New York, Ny 10018 212-921-9036

SAMPLE REQUEST

Brand: **Due in NY:ASAP** Date: 8/20/2024

Style Number	Style Description	Fabric Ref #	Fabric Description	Fabric Color	Garment Wash & Pressing	Thread Color	Trim	Inside Waist	Label	Notes	Sample Size
75361R5	FAUX FLY UTILITY PANT	S-2490 RIP STOP	98%CTTN 2%SPAN 228GSM	BODY: WARM TAUPE DS: OVERDYED WARMTAUPE SAME STRIPES ----- PPD	NO WASH Lt Steam	7 SPI DTM GROUND	FLAT 1 5/8" ELASTIC: FOR WB COLOR: WHITE 12MM METAL GROMMENTS FOR D-STRING EXITS 2PC COLOR: ANTI NICKLE 3/8" D-STRING COLOR: AS REFERENCE 1 DTM #3 ZIPPER @ LEG POCKET	ENCASED ELASTIC	NO LABEL		S QTY: 1

D-STRING REF

